

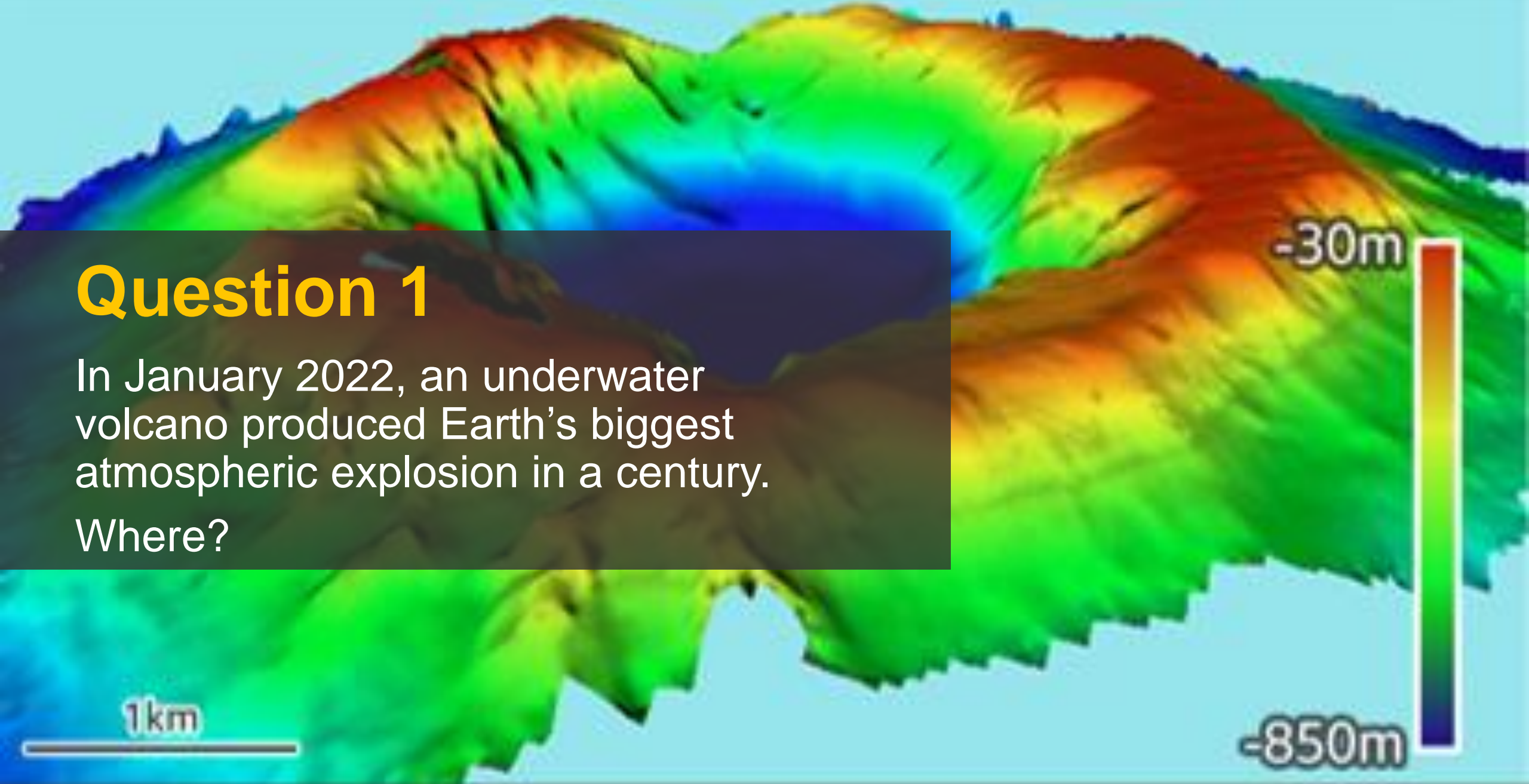
A stack of rolled-up newspapers, with the top one slightly unrolled, showing the text and images on the pages. The stack is piled high, and the newspapers are slightly aged and yellowed.

GEOGRAPHY IN THE NEWS

Round 5

Question 1

In January 2022, an underwater volcano produced Earth's biggest atmospheric explosion in a century. Where?



Question 2

In June 2022 it was announced that Nepal may be moving Everest base camp 400m lower down the mountain.

Why move?

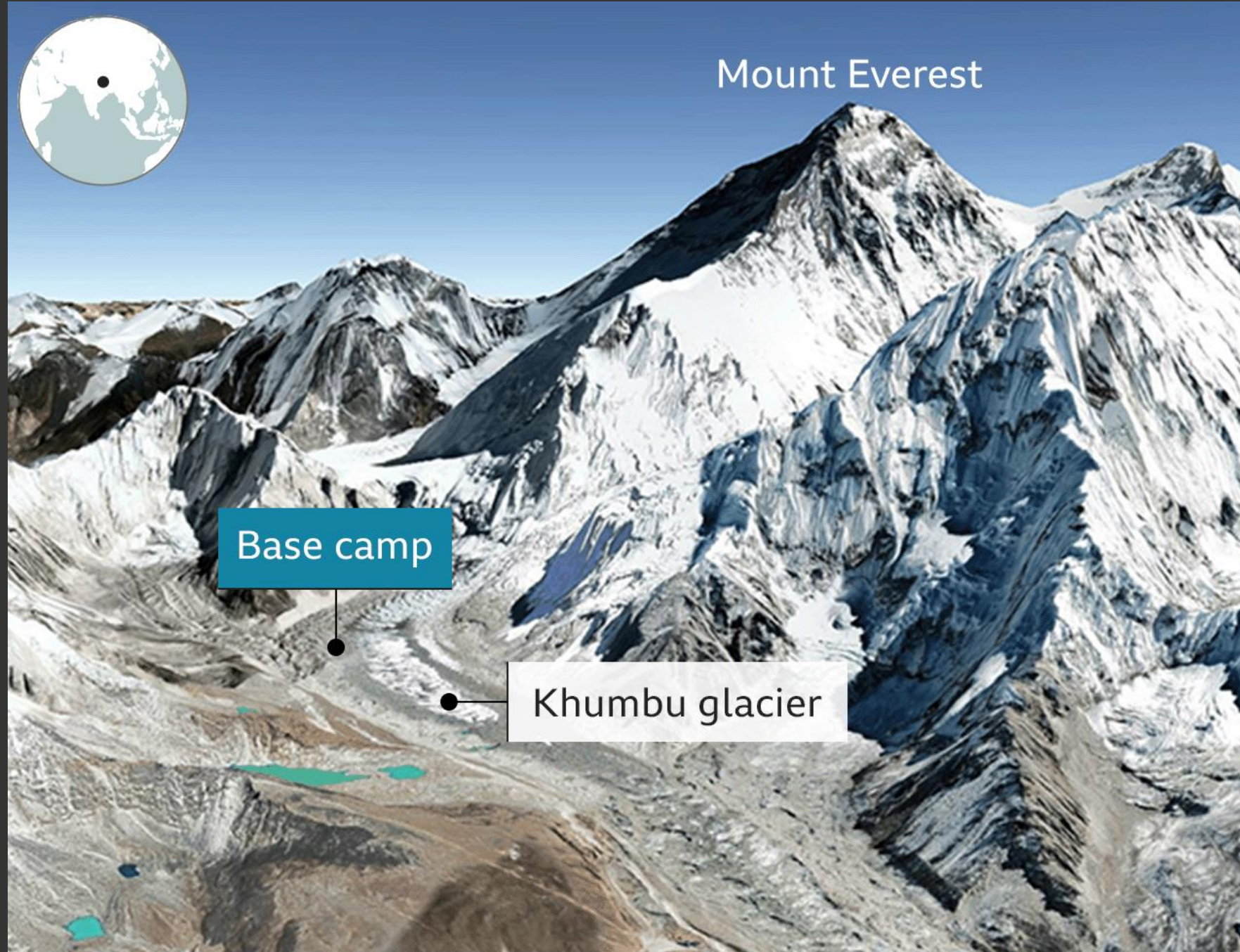


Image: Google Earth (3D-model from satellite imagery)



Question 3

Italy's largest river, the Po, reached unusually low levels in June due to drought. What was revealed when the water levels dropped?

- a) 52 shopping trolleys
- b) A 1972 Ferrari worth \$2 million
- c) A World War 2 barge shipwrecked in 1943



Question 4

In April 2022 the Philippines was ravaged by what type of natural hazard?



Question 5

What is unusual about an innovative farm being built in Lincolnshire due to open in autumn?



Question 6

The image shows the aftermath of a deadly earthquake in June 2022. Where?

Question 7

Hundreds of people were hospitalised in Tokyo, Japan in January after it received its highest what in years:

- a) snowfall
- b) earthquake
- c) floods

Data SIO, NOAA, U.S. Navy, NGA, GEBCO
Image Landsat / Copernicus
Data Japan Hydrographic Association

Google Earth

Question 8

Bill payers in the UK have been left shocked by massive price rises for what resource?



Question 9

Which famous US National Park had to evacuate 10'000 visitors recently due to historically high flooding, with roads, bridges and homes destroyed?



Question 10

The UK has faced several fuel crisis events in the past months, with the cost of filling the tank of an average family car now costing £100.

Suggest one reason for the rise in fuel costs.



Answers: Round 5

1. Tonga
2. The current base camp is close to the Khumbu glacier which is melting and retreating due to climate change, causing rock falls and other hazards
3. C) a 1943 barge
4. Tropical storm, Megi
5. The farm is vertical! The size of 96 tennis courts.
6. Afghanistan
7. A) snowfall
8. Home energy prices, e.g. gas and electricity
9. Yellowstone National Park
10. Reasons include: sanctions on Russian oil into Europe, restricted trade due to the invasion of Ukraine, increased demand for fuel from China and the USA, a weak pound to dollar currency exchange due to Brexit, transport issues due to not enough tanker drivers, etc.