



In partnership with...

**CRITICAL
THINKERS**

CRITICAL THINKING

Round 10



BEFORE YOU GET QUIZZING...



Who are Critical Thinkers?

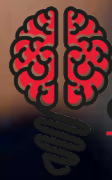
Critical Thinkers is a social enterprise, with the mission of empowering the next generation to become more resilient, emotionally intelligent and, in turn, more effective critical thinkers.

They offer free resources, courses from their panel of experts, and innovative awards.

We will be working with Critical Thinkers to help us provide Resilience and Wellbeing School Trips that are designed by psychologists and education specialists.

Question 1

Spot the odd one out:
'Thinking critically
includes questioning,
examining, reflecting,
comparing, accusing
and evaluating'



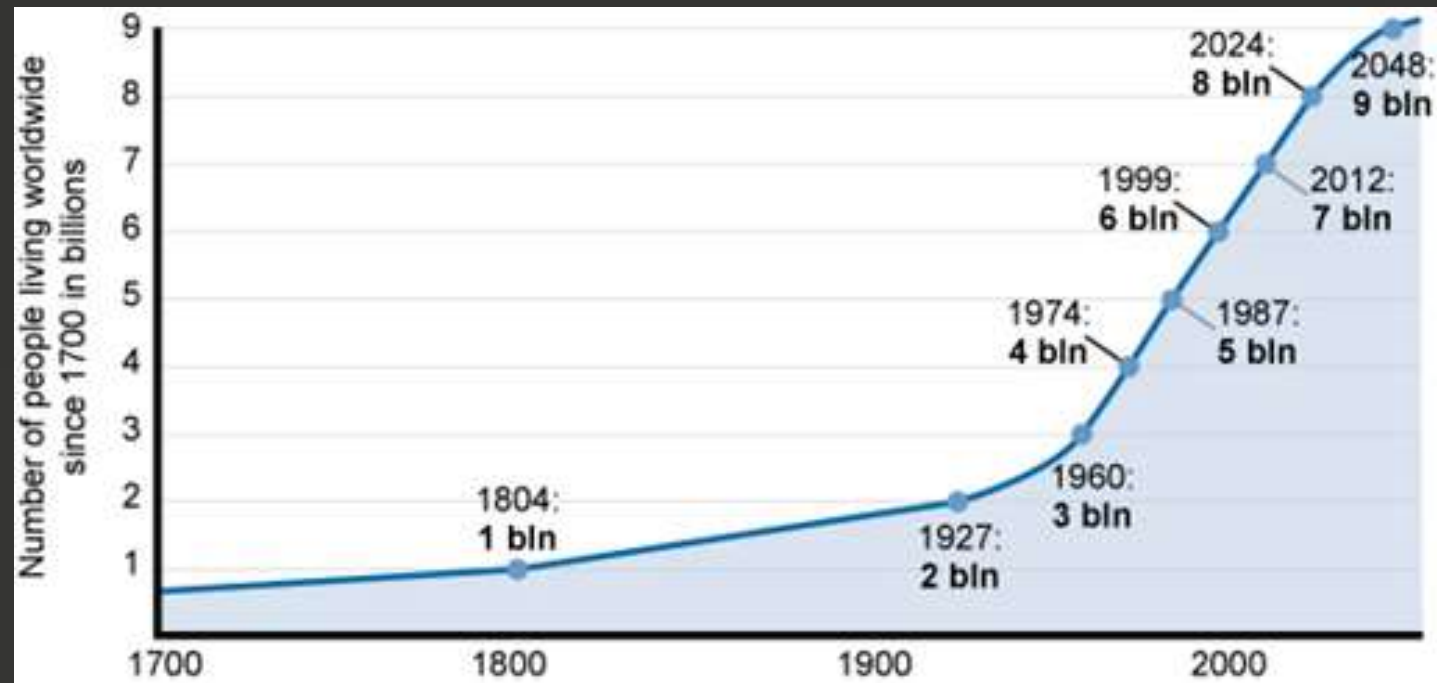
CRITICAL
THINKERS

Question 2



Is this a fact, or an opinion?

‘World population size doubled between 1927 and 1974.’

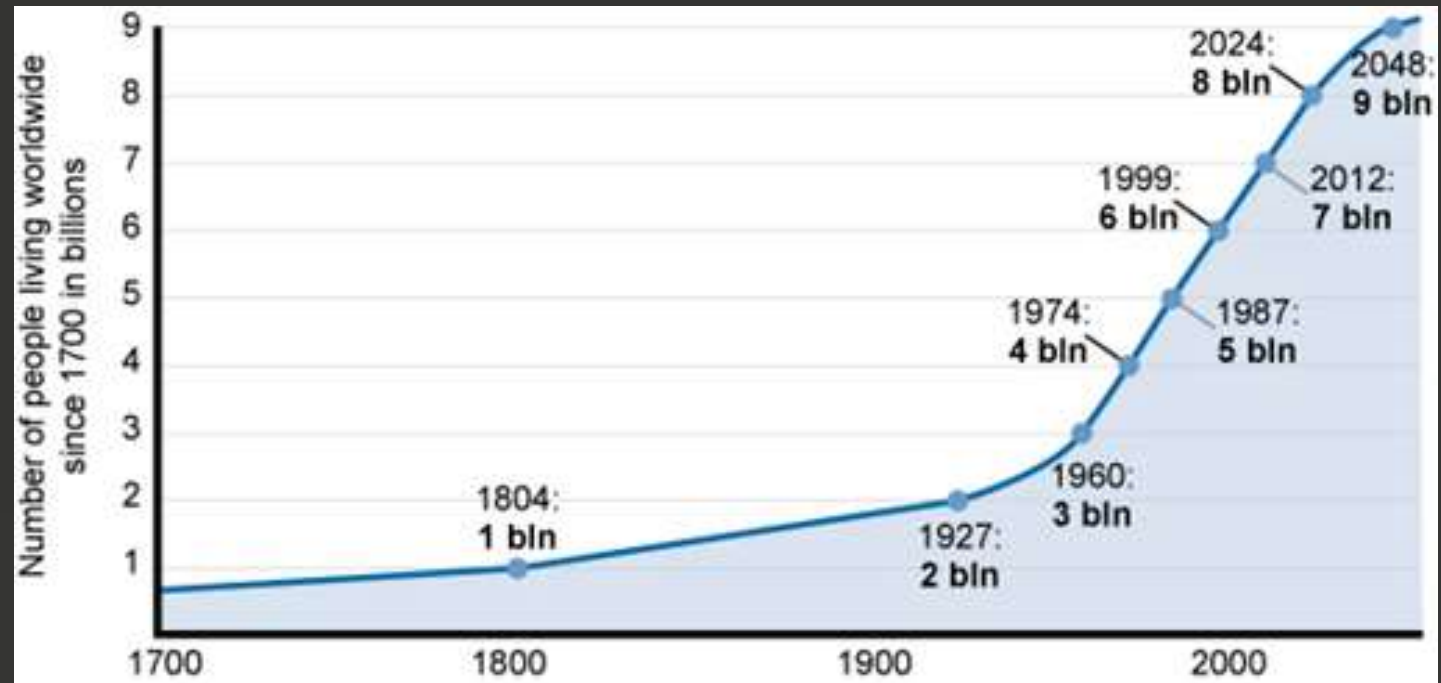


Question 3



Is this a fact or an opinion?

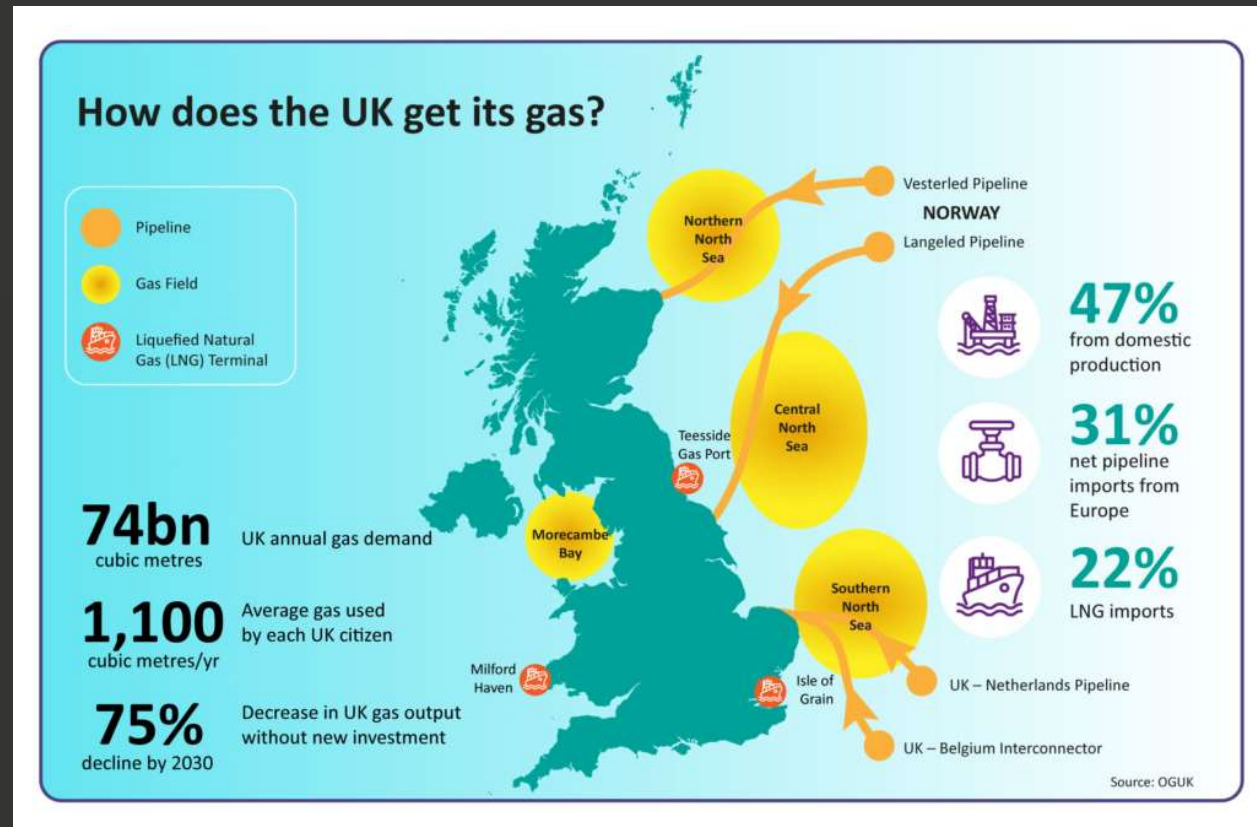
‘Population growth has exploded in the last 50 years.’



Question 4

The UK relies upon gas exports from other nations.

Name one positive factor about this trade, and one negative.





Question 5

The UK government has committed to increasing renewable energy sources and abolishing fossil fuels.

Name one stakeholder group that would support this move, and one that would be against this.





Question 6

Social media is full of stories about environmental concerns. How can you tell whether information from online is reliable?



Question 7

Could this be considered a biased message? How?



Question 8

Which of these words could be used to describe this quote?

- a. Exaggerated
- b. Powerful
- c. Biased
- d. True
- e. False
- f. Passionate

“Sooner or later we must recognise that the Earth has rights too, to live without pollution. What mankind must know is that human beings cannot survive without Mother Nature but the planet can live without humans.”

Evo Morales - Bolivian political leader

*“To all of you who choose to look the other way every day because you seem more **frightened** of the changes that can prevent **catastrophic** climate change that the catastrophic climate change itself.*

*Your silence is **worst** of all.”*

Great Thunberg – Environmentalist

Question 9

The three highlighted words show evidence of:

- a) persuasive language
- b) emotive language
- c) bias



**CRITICAL
THINKERS**



Question 10

‘The Earth does not belong to us, we belong to the Earth.’ (*Chief Seattle*)
What do you think this ancient quote means?

Answers: Round 10

1. Accusing is the odd one out
2. Fact
3. Opinion
4. Positive, e.g. encourages income for other nations, builds international relations, reduces the need for our own gas extraction / drilling, reduces environmental damage here. Negative, e.g. reliance can mean dependence so we don't have control if prices change, it can cause shortages if there is competition with other nations, we are at risk if there are transport problems.
5. Positive stakeholders, e.g. environmental groups, renewable energy firms, businesses that build materials for solar panels / wind turbines, etc. Negative stakeholders, e.g. fossil fuel companies, coal / gas / oil businesses & workers
6. e.g. source check – is the source biased or reliable, cross-check with others, etc.
7. E.g. strong language such as 'destroying' and the imagery gives no other point of view, no data to support this, the artist is trying to convey a political message
8. B, D, F
9. B) emotive
10. E.g. That we have a responsibility to care for the Earth, that we do not have the right to treat it as a commodity that we own or abuse it