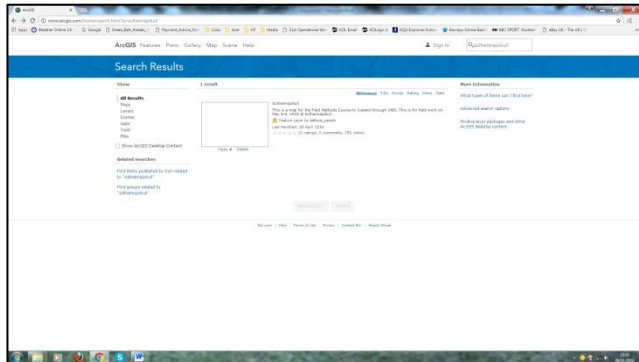


Using GIS to investigate Sólheimajökull

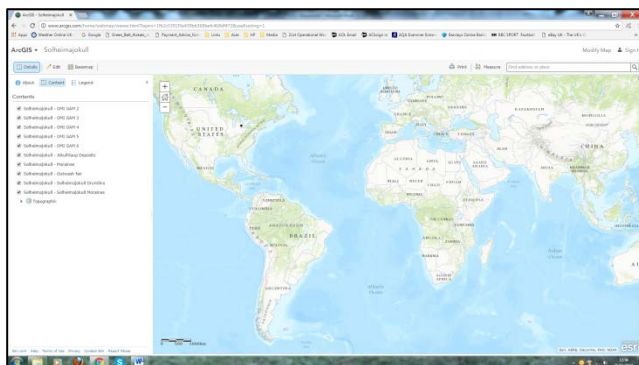
This exploration activity can be conducted individually or in pairs. Throughout this exploration, pausing to share experiences and discussing outcomes is recommended.

Access the ArcGIS site at <http://www.arcgis.com/home/search.html?q=solheimajokull> . Here you will find a great deal of information about glacial landforms that have been revealed by the retreat of the glacier.

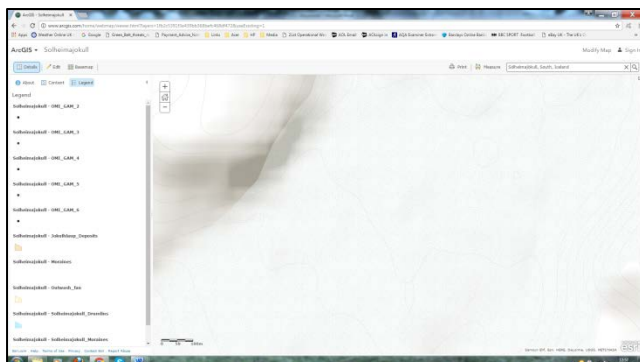


<http://www.arcgis.com/home/search.html?q=solheimajokull>

- Click 'open' to reveal the base map of Sólheimajökull



- Type Sólheimajökull into the map search box top right of the screen
- Click 'legend' (top left) to reveal a key for the symbols on the map



<http://www.arcgis.com/home/webmap/viewer.html?layers=1fb2c5391f3e439bb368befc468df472&useExisting=1>

You can now explore the information available on this site:

- Drag the map and use the zoom tool to move around
- Click on the various symbols and black lines to find out about the landforms of glacial deposition, such as moraines and drumlins, and to zoom in
- The moraines indicated by the black lines are dated to give you an idea of change over time
- Some locations have attachments including photos
- You can change the basemap (click symbol top left) to a satellite image if you prefer
- You can also conduct measurements of distance and area (tool above the map to the right)
- You can add or take away individual layers by using the return key
- Be prepared to look up words that you have not come across

Activities

1. Having spent some time investigating this site, write a short review about the website.
 - What do you like/ dislike about it?
 - How useful is it for studying glacial landforms and assessing the impact of climate change?
 - How could it be improved?

Consider printing out or 'print screen' one view (map, photo, etc) that you think is particularly interesting. Why have you chosen this particular view?