

A glass jar of white yogurt is the central focus, topped with several fresh blueberries and a dusting of oats. The jar sits on a rustic, dark wooden surface. Scattered around the jar are more blueberries and oat flakes, some in sharp focus and others blurred in the background. A semi-transparent dark grey rectangular box is overlaid on the left side of the image, containing the text.

HUMAN LANDSCAPES

Round 4



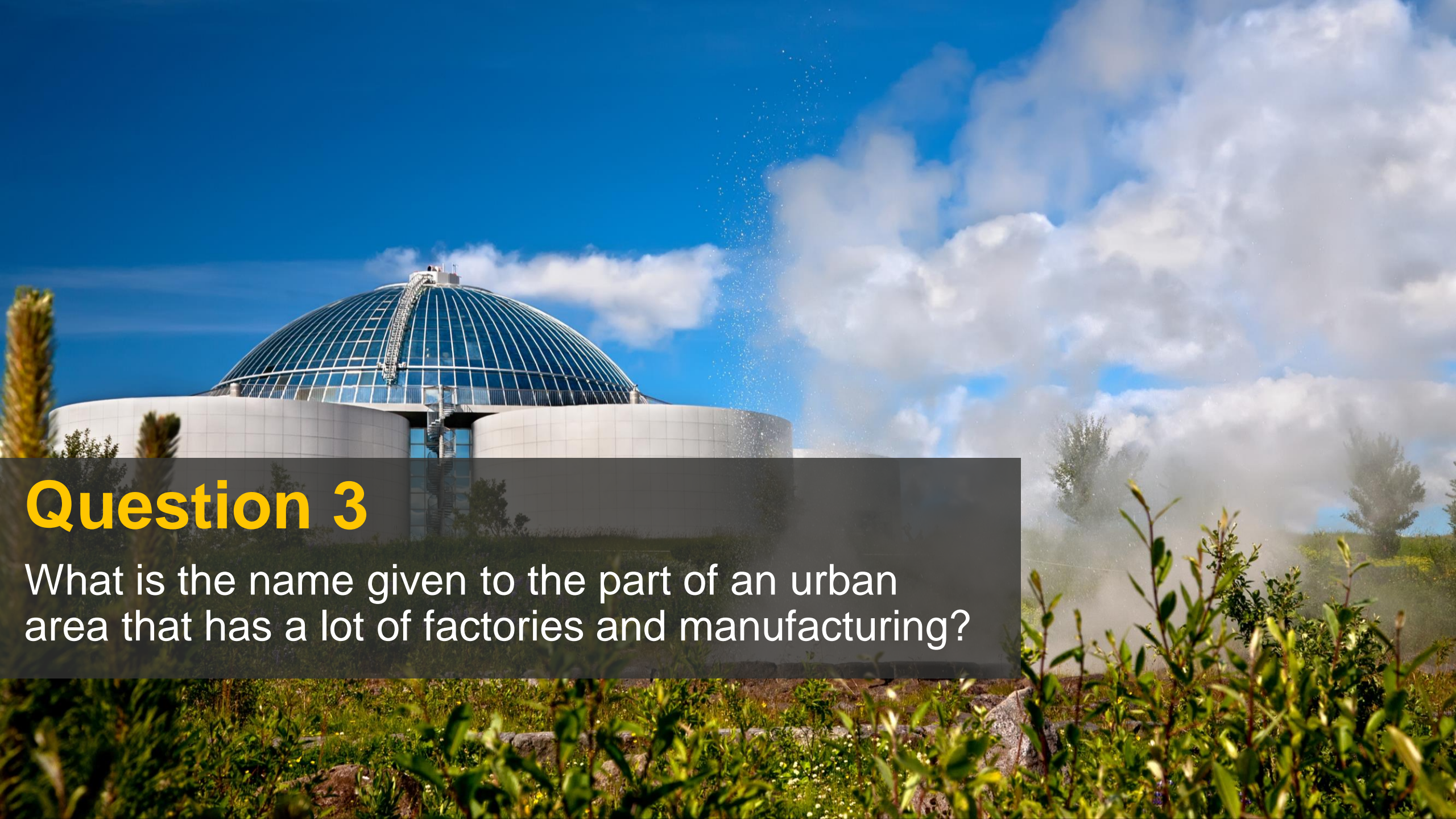
Question 1

What is meant by 'urbanisation'?



Question 2

True or False: the outer suburbs attract people due to larger houses and gardens.



Question 3

What is the name given to the part of an urban area that has a lot of factories and manufacturing?



Question 4

Suburbanisation is the process of people moving out of urban areas and towards the countryside. Give one reason they might want to leave.

A photograph of a vintage tractor show in a grassy field. In the foreground, several red International tractors are parked in a line. In the background, more tractors of various colors (red, green, orange) are visible, along with a person standing near one of them. To the right, there is a two-story white building with a blue roof. The sky is blue with some clouds, and mountains are visible in the distance.

Question 5

The Earth's population is approximately how many?

- a) 8.07 billion
- b) 8.57 billion
- c) 9.07 billion

Question 6

Approximately how many languages are spoken in England?

- a) 50
- b) 150
- c) 300



The background image shows a town built on a hillside under a bright blue sky with scattered white clouds. A prominent church with a tall, square bell tower and a dome is the central focus. In the foreground, a field of vibrant red poppies is in bloom, partially obscuring the lower part of the town.

Question 7

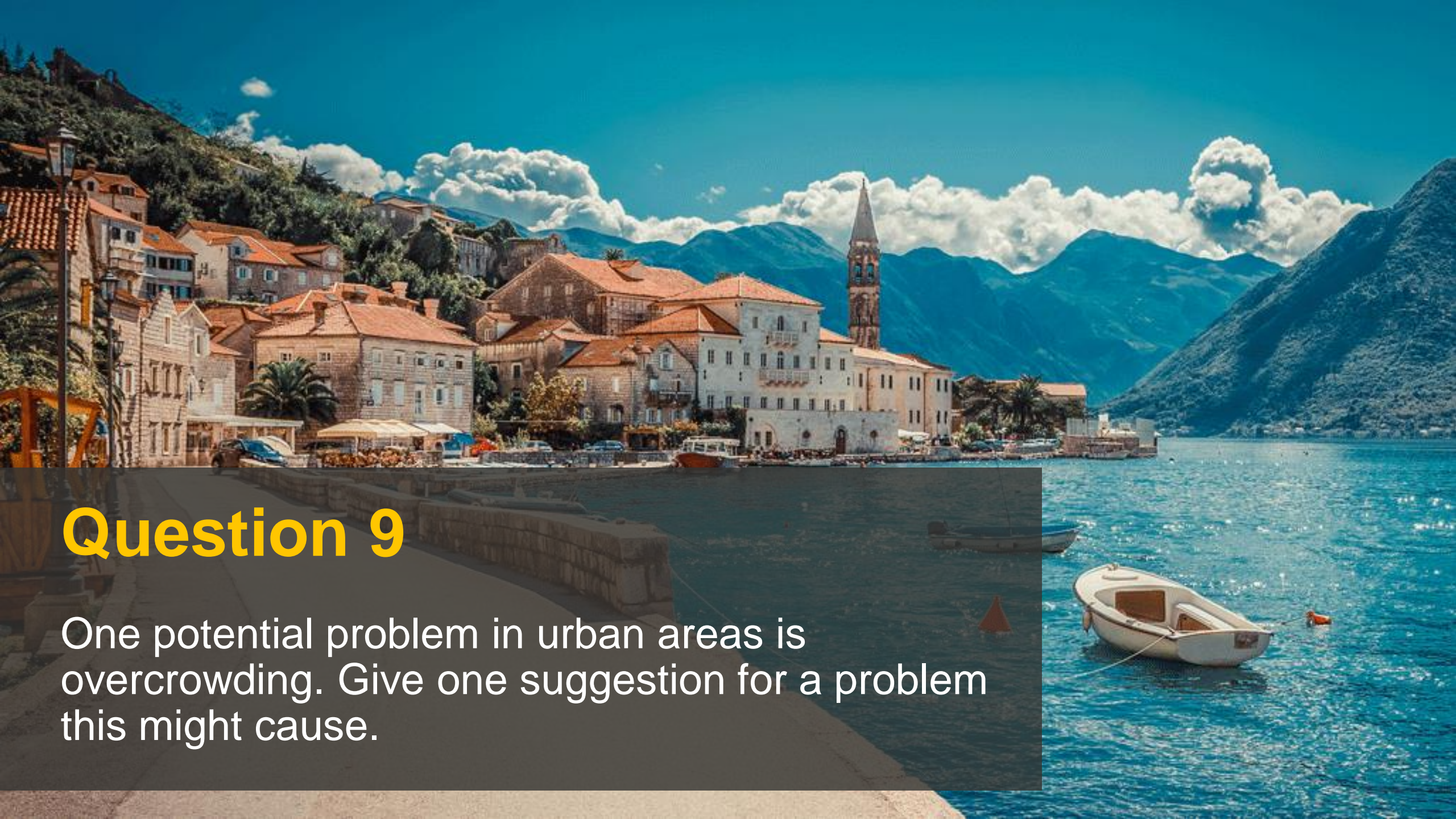
In the 2021 census, 91.1% of people in England said that English was their main language.

Name one of the other top five languages spoken.



Question 8

Name one example of a megacity



Question 9

One potential problem in urban areas is overcrowding. Give one suggestion for a problem this might cause.

Question 10

True or false: 84% of people in the UK live in urban areas



Answers: Round 4

1. Urbanisation is the process of more people migrating to urban areas; of urban areas growing; or areas becoming more urban / town-like, etc.
2. True
3. Industrial Zone
4. E.g. Push factors including overcrowding in the city, lack of affordable housing, lack of infrastructure such as schools, etc.; Pull factors including larger homes with bigger gardens, cleaner environment, more green space, etc.
5. A) 8.07 billion
6. C) 300
7. Polish, Romanian, Panjabi, Urdu, Portuguese
8. E.g. Hong Kong, Bangkok, Manila, Tokyo, Beijing, Seoul, Shanghai, etc.
9. E.g. not enough doctors or hospitals, crowded schools, competition for work, unemployment, expensive housing, lack of housing, etc.
10. True